

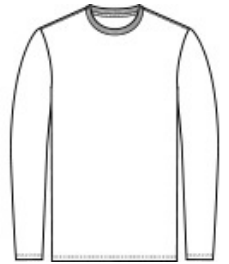


A tee that genuinely matches your favorite collegiate and professional sports team colors.

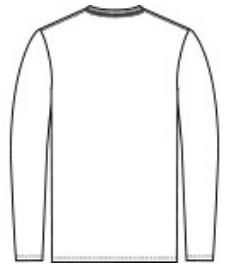
- 4.5-ounce, 100% ring spun cotton, 30 singles
- 90/10 cotton/poly (Athletic Heather)
- 50/50 cotton/poly (Dark Heather Grey)
- Removable tag for comfort and relabeling

CARE INSTRUCTIONS

Machine wash cold inside out with like colors. Only non-chlorine bleach when needed. Tumble dry low. Do not iron.



front



back

HOW TO MEASURE



CHEST WIDTH
Measure under the arm and around the fullest part of the chest with arms down, keeping tape horizontal.

SIZE CHART

| | S | M | L | XL | 2XL | 3XL | 4XL | 5XL | 6XL |
|-------|-------|-------|-------|-------|-------|-------|-------|-------|-------|
| Chest | 35-37 | 38-40 | 41-43 | 44-46 | 47-49 | 50-53 | 54-57 | 58-60 | 61-63 |

COLOR INFORMATION

| | | | | | | | | | | |
|--|-----------------------------|-----------------------------|--------------------------|-------------------------|----------------------------------|-----------------------------------|-----------------------|-------------------------|---------------------------|---------------------------------|
| | | | | | | | | | | |
| Athletic Heather PMS COOL GRAY PMS 7733C 7C | Athletic Kelly PMS 7733C | Athletic Maroon PMS 209C | Bright Gold PMS 1235C | Bright Red PMS 186C | Charcoal PMS COOL GRAY 11C | Dark Heather Grey PMS 7540C | Deep Navy PMS 532C | Flash Green PMS 368C | Forest Green PMS 7736C | Jet Black PMS NTR BLACK C |
| | | | | | | | | | | |
| Orange PMS 172C | Team Cardinal PMS 201C | Team Navy PMS 2766C | Team Purple PMS 669C | True Royal PMS 7687C | White | | | | | |