

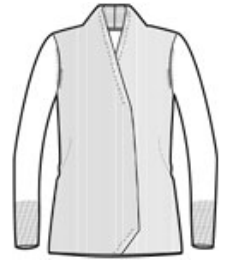


This soft, cozy cardigan sweater has a flattering drape and features fully-fashioned sleeves for strength and enduring wear. Stylish longer rib knit height details at cuffs and hem.

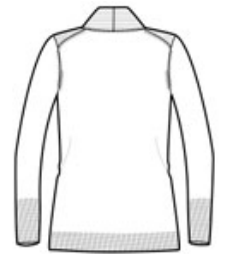
- 60/40 cotton/nylon
- Rib knit collar, cuffs and hem

CARE INSTRUCTIONS

Wash cold with like colors, non-chlorine bleach if necessary, lay flat to dry.



front



back

HOW TO MEASURE



BUST
Measure under the arm and around the fullest part of the bust with arms down, keeping tape horizontal.

SIZE CHART

| | XS | S | M | L | XL | XXL | 3XL | 4XL |
|------|-------|-------|-------|-------|-------|-------|-------|-------|
| Size | 2 | 4/6 | 8/10 | 12/14 | 16/18 | 20/22 | 24/26 | 28/30 |
| Bust | 32-34 | 35-36 | 37-38 | 39-41 | 42-44 | 45-47 | 48-51 | 52-55 |

COLOR INFORMATION



Black
PMS NTR BLACK
C



Medium Heather Navy
Grey
PMS 425C



Navy
PMS 532C